

BULK WASTE COLLECTION

Moree Plains Shire Council offers two **free** scheduled Bulky Waste Collections each year - one in March and one in August. This service helps households dispose of large items that cannot fit into the wheelie bins and unwanted materials such as mattresses, e-waste, and scrap metals.

COLLECTION DATES

MOREE TOWNSHIP AND SURROUNDING AREA

Gurley, Gwydirville and Bendygleet

Register by Friday August 2, 2019

Collection from Monday August 5, 2019

MOREE VILLAGES

Ashley, Biniguy, Boggabilla, Boomi, Garah, Mungindi, Pallamallawa, Vitonga Road, Weemelah and Yarraman

Register by Friday August 9, 2019

Collection from Monday August 12, 2019

WHAT TO DO

Step 1:

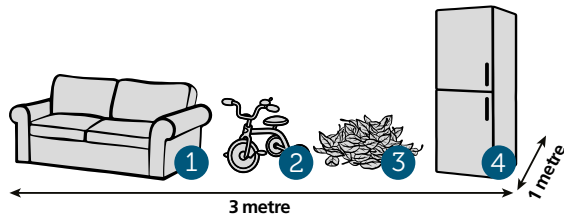
Register on the bulky waste booking tab at <http://moreeplainsshire.cleanaway.com.au/collection-calendar/> or call the Waste Hotline **1300 736 719** and leave your name, phone number and address

Step 2:

On the weekend before collection starts, separate and stack items into 4 piles on the kerb. Only 3 cubic metres of waste per household is permitted.

- 1 Large Items
- 2 General Household Waste
- 3 Green Waste
- 4 Metals, Whitegoods and E-waste

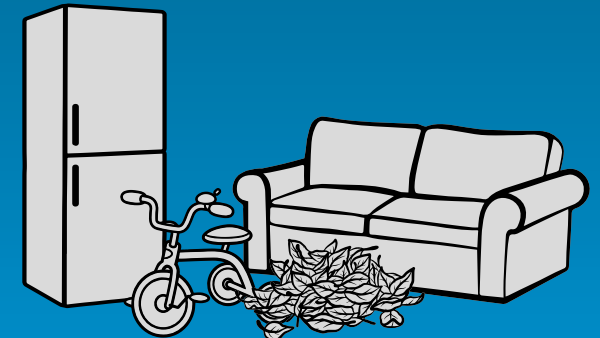
No items should be put out or added to the existing piles after Sunday night even if waste remains.



Reporting missed collections

The bulky waste collection may happen at any time during the collection period, however if your waste has not been collected by Friday of the collection week contact the Waste Hotline on 1300 736 719 or email: NWwasteservices@cleanaway.com.au

Bulky Waste Collection



Waste Hotline: 1300 736 719

Email: NWwasteservices@cleanaway.com.au

✓ SUITABLE ITEMS

(separate into piles)

1

Large Items

(Items must be no heavier than two people can carry)

- Mattresses, lounges and sofas
- Furniture - tables, chairs, wardrobes and bookshelves (remove glass and mirrors)
- Rugs & carpets (no longer than 1.8m)



2

General Household Waste

- Clothing and shoes
- Manchester - towels and bedding
- Toys, car seats, playpens and walkers
- Discs - videos, DVDs, CDs and games
- Timber, fencing and wooden pallets
- Plastic flower pots



3

Green Waste

(Must be no more than 1m high)

- Garden prunings less than 1.8m in length and no thicker than 250mm in diameter. Must be bundled and tied
- Loose vegetation packed into cardboard boxes (no plastic bags)



4

Metals, Whitegoods and E-waste

(Items must be no heavier than two people can carry)

- Scrap metal and empty tins
- Whitegoods (remove doors)
- Air conditioners and humidifiers
- Swing sets, trampolines (must be dismantled)
- Heaters, hot water systems
- Kitchen appliances - toasters, microwaves
- Fencing and wire (rolled and bundled)
- Lawn mowers (wheels and fluids removed)
- Bicycles (tyres and seat removed)
- Aluminum doors and windows frames (no glass)
- E-waste - TV, computers, printers, gaming systems



✗ UNSUITABLE ITEMS

Householders must deliver these items personally to the Moree Waste Management Facility, so that each item can be assessed and appropriately disposed of.

- Containers - full or partially filled of liquid
- Hazardous or toxic waste - paints, chemicals or oils
- Demolition materials - asbestos, concrete or bricks
- Carpets heavier than 50kg
- Vehicle parts - windscreens, tyres or batteries
- Rocks or soil
- Glass or mirrors
- Fluorescent lights or gas bottles
- Tree stumps or thick branches (over 250mm diameter)
- Item exceeding 1.8m
- Collections larger than 3 cubic metres



SAFETY FIRST

Consider the hazard your kerbside waste could create from accidental poisoning, drowning, injuries and contamination

- Box, tie, or contain all loose items (to stop wind-blown litter)
- Wrap sharp edges (prevent cuts)
- Take doors off whitegoods (due to possible entrapment)
- Remove or cut cords off faulty equipment (choking and electrocution)
- Hazardous or toxic material should be personally taken to the landfill (due to contamination)
- Dispose of fluids appropriately (fluids can contaminate the environment or poison children/pets)
- Place lids on containers and item that collect more than 30mm of water (prevent drowning)

Why Not Try to Recycle

The items you put on the kerb are recycled where possible but mostly they will end up going directly to landfill. Consider re-homing your items by selling, donating or giving them away.



Sell It

- Advertise on Facebook, Gumtree or eBay
- Place a classified ad in the local newspaper
- Post on the shopping centre noticeboards
- Hold a garage sale
- Host a workplace 'swap and buy'

Donate It

- | | |
|--|-----------|
| Salvation Army | 6752 7351 |
| St Vincent de Paul | 6752 2385 |
| Moree Lifehouse Care | 6752 8009 |
| Gwydir Industries (cardboard) | 6752 3202 |
| Contact local schools, aged facilities, community organisations, clubs and groups. | |