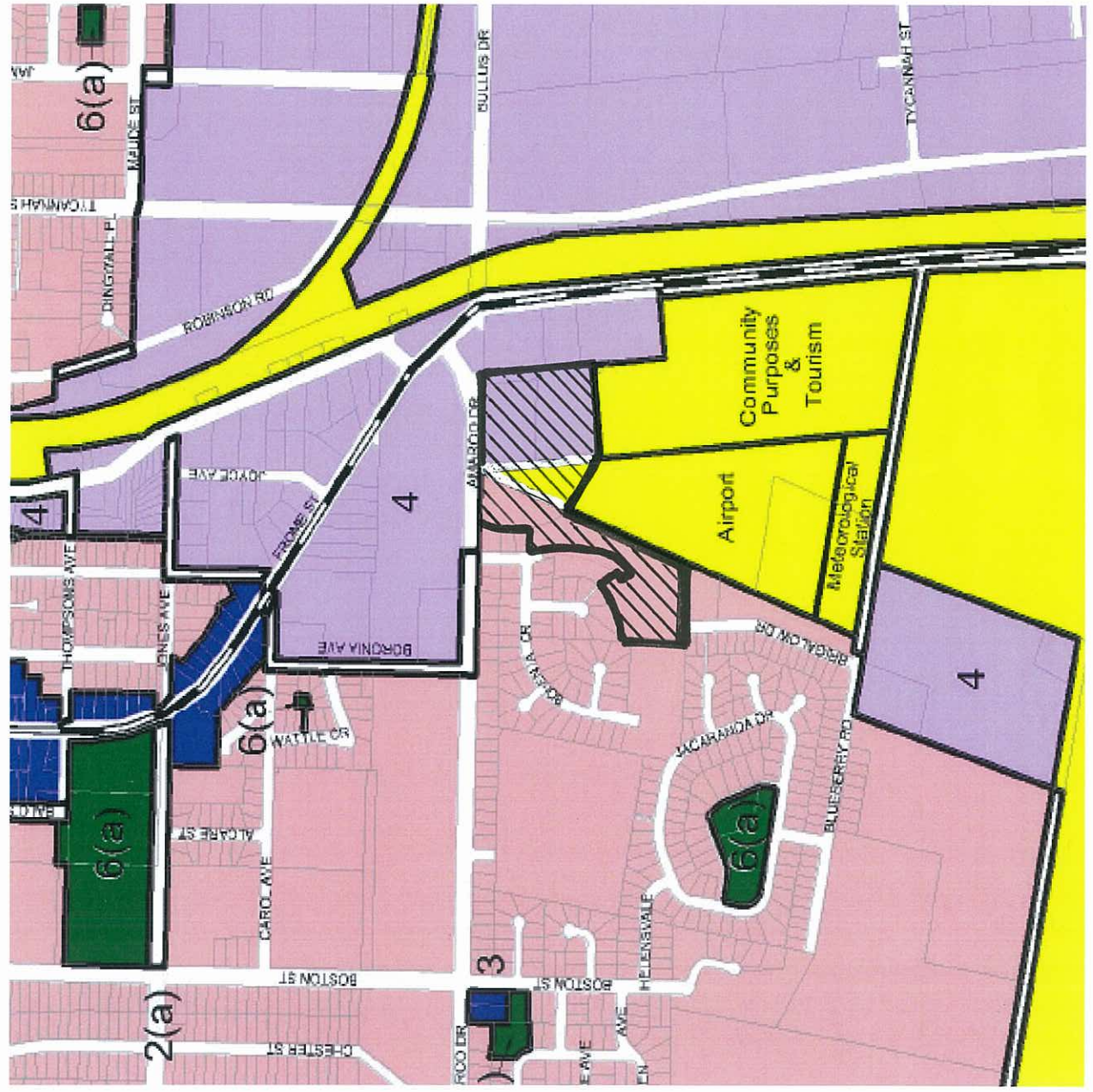


CURRENT ZONING



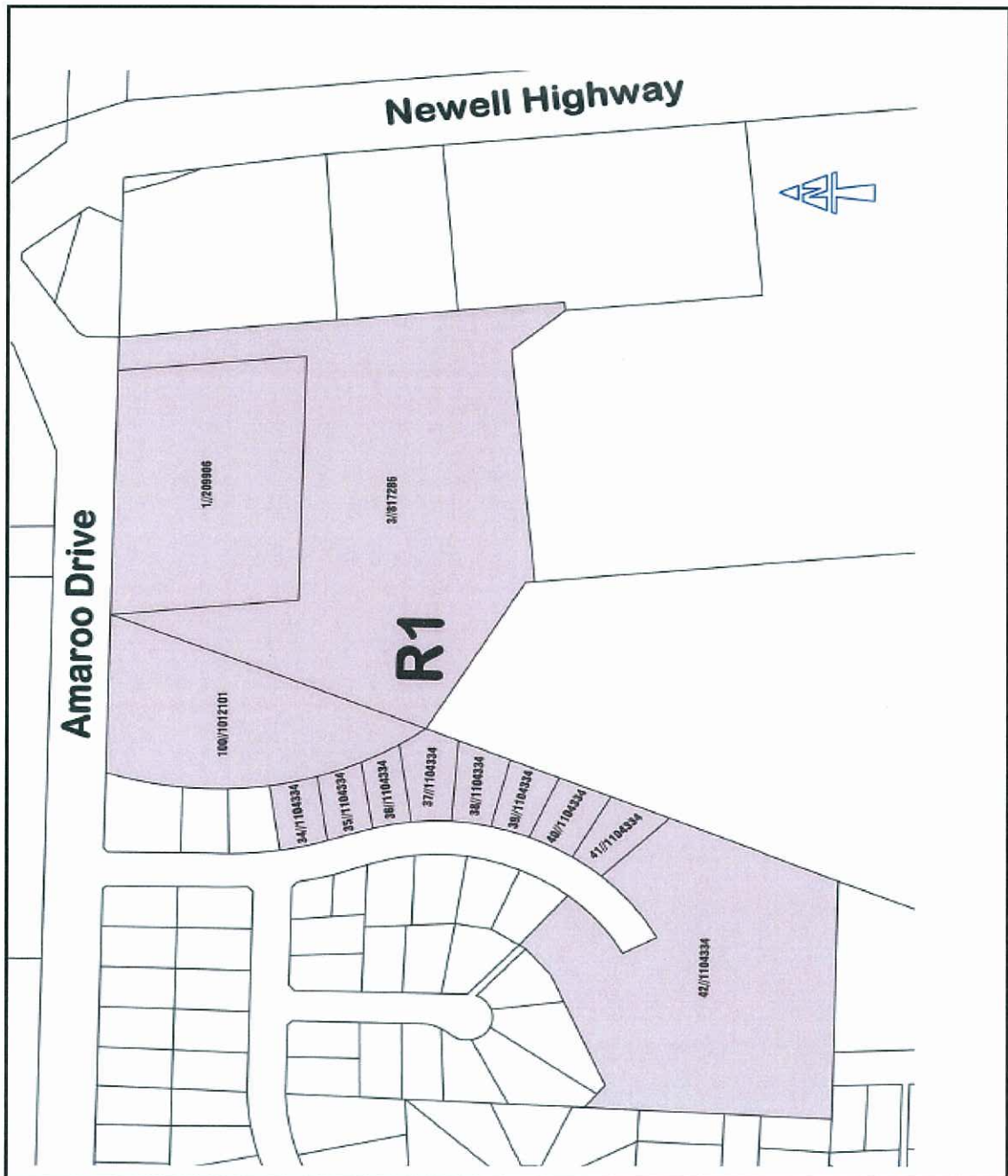
Area to be Re-zoned



Local Environment Plan 1995

Land Zoning Map

Zone	Description
1(a)	General Rural
1(c)	Rural Small Holdings
2(a)	Residential
3	Business
4	Industrial
5	Special Uses Community Purposes
6(a)	Public Open Space
6(b)	Private Open Space
7	Environment Protection - Habitat
	Cadastral supplied by MPSC 2008



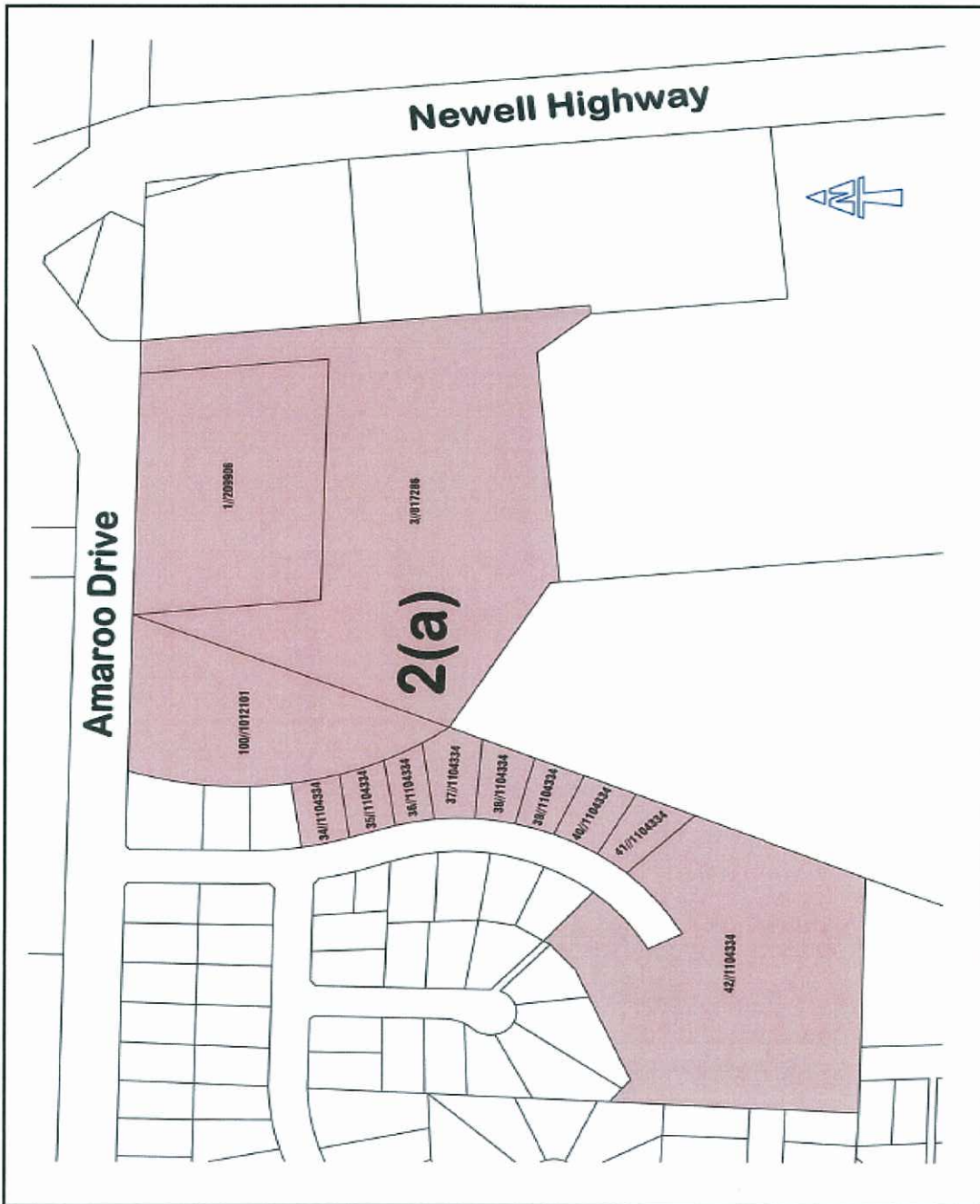
Zone	Color	Zone Name
B1	Light Blue	Neighbourhood Centre
B2	Blue	Local Centre
B3	Dark Blue	Commercial Core
B6	Light Green	Enterprise Corridor
B7	Green	Business Park
E1	Orange	National Parks and Nature Reserves
E3	Yellow-Orange	Environmental Management
E4	Yellow	Environmental Living
IN1	Purple	General Industrial
IN2	Light Purple	Light Industrial
R1	Red	General Residential
R2	Dark Red	Low Density Residential
R5	Light Red	Large Lot Residential
RE	Green	Public Recreation
RE2	Light Green	Private Recreation
RU1	Yellow-Green	Primary Production
RU4	Light Yellow	Rural Small Holdings
RU5	Yellow	Village
SP1	Light Yellow	Special Activities
SP2	Yellow	Infrastructure
Cadastral	White	Cadastral
	White	Base Data 1/7/08 © NSW LPMA

**Local Environment  
Plan 1995**

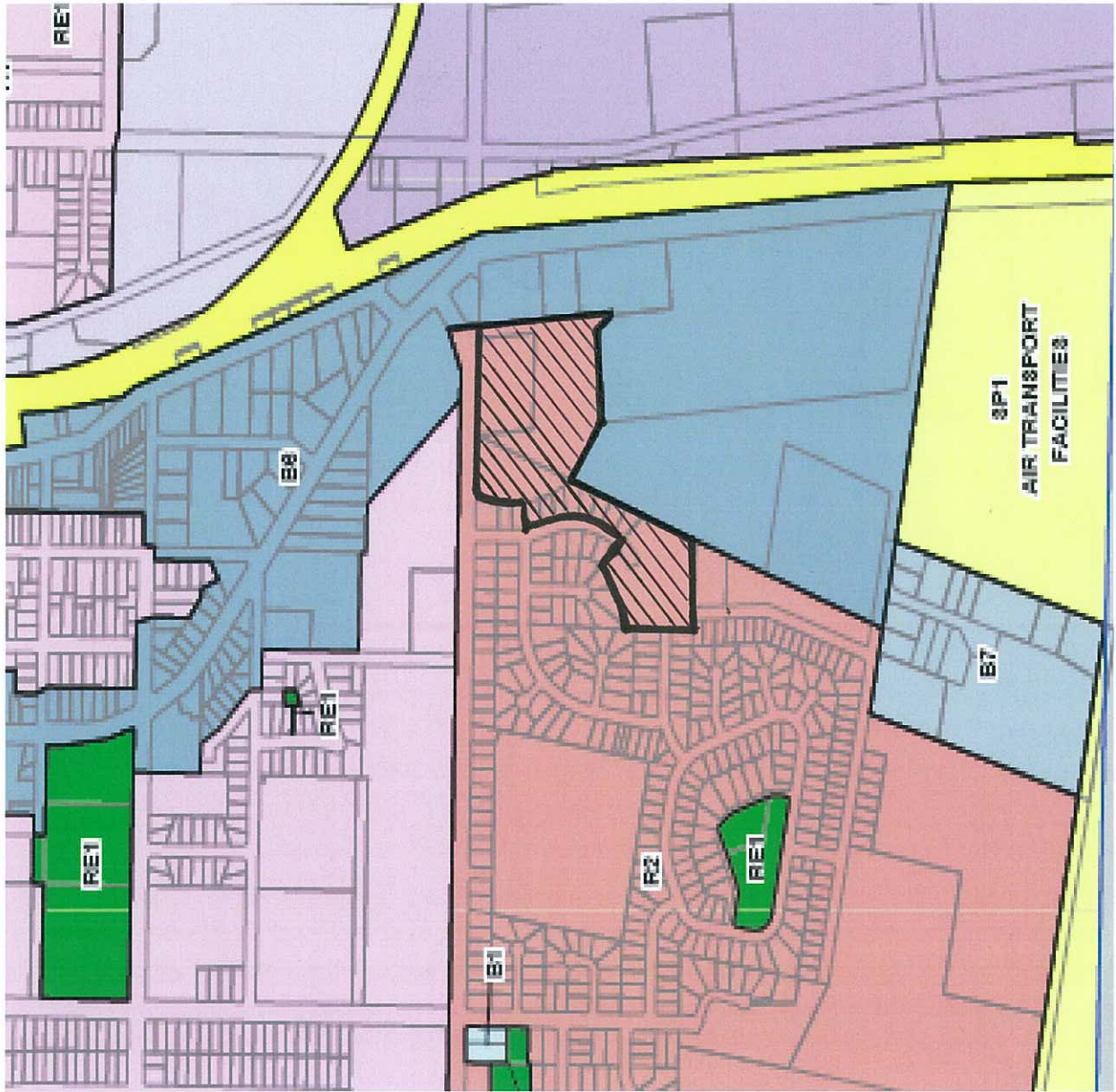
**Land Zoning Map**

Zone	Description
1(a)	General Rural
1(c)	Rural Small Holdings
2(a)	Residential
3	Business
4	Industrial
5	Special Uses Community Purposes
6(a)	Public Open Space
6(b)	Private Open Space
7	Environment Protection - Habitat

Cadastral supplied by MPSC 2008



Exhibited zoning under the Draft LEP2011



*Area to be rezoned*



Moree Plains Local Environmental Plan 2011

Land Zoning Map - Sheet LZN\_011

- Zone
- B1 Neighbourhood Centre
  - B2 Local Centre
  - B3 Commercial Core
  - B6 Enterprise Corridor
  - B7 Business Park
  - E1 National Parks and Nature Reserves
  - E2 Environmental Management
  - E3 Environmental Living
  - IN1 General Industrial
  - IN2 Light Industrial
  - R1 General Residential
  - R2 Low Density Residential
  - R5 Large Lot Residential
  - RE1 Public Recreation
  - RE2 Private Recreation
  - RU1 Primary Production
  - RU4 Rural Small Holdings
  - RU5 Village
  - SP1 Special Activities
  - SP2 Infrastructure
  - Cadastre
- Base Data 1/7/08 © NSW LPMA