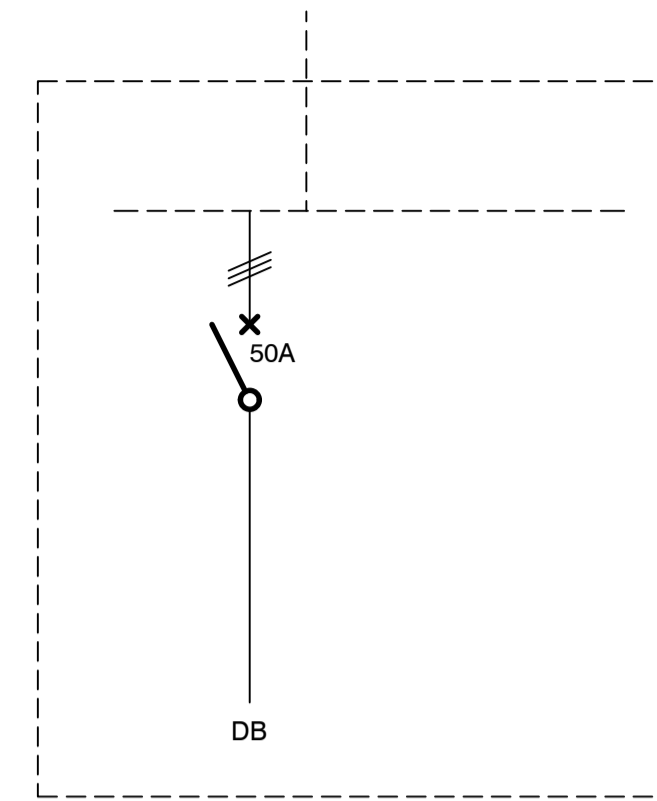


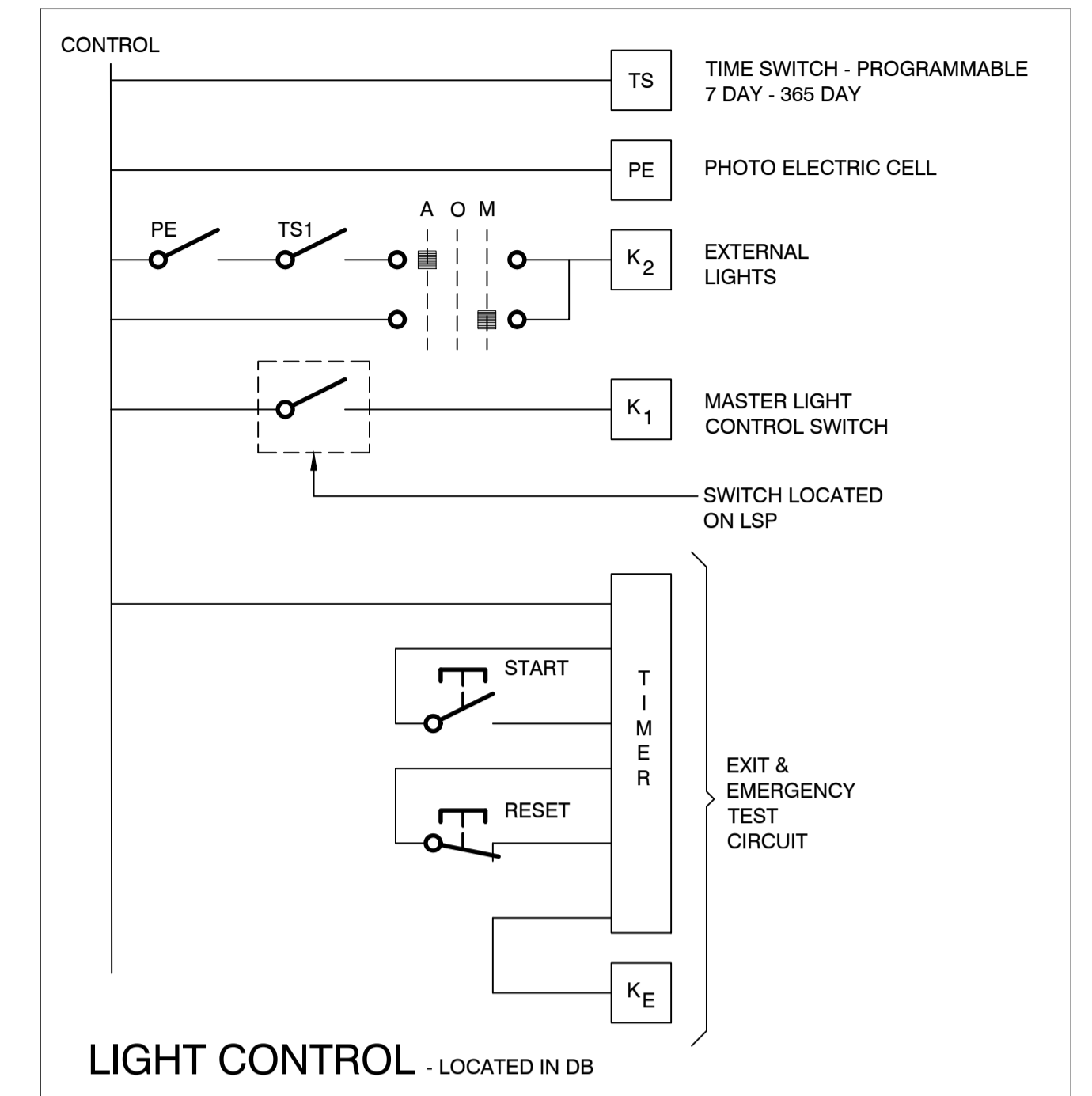
**LIGHTING LAYOUT**

- DB-L1 TOILETS
- DB-L2 CHANGE ROOMS
- DB-L3 MEDICAL + OFFICIALS
- DB-L4 EXTERNAL

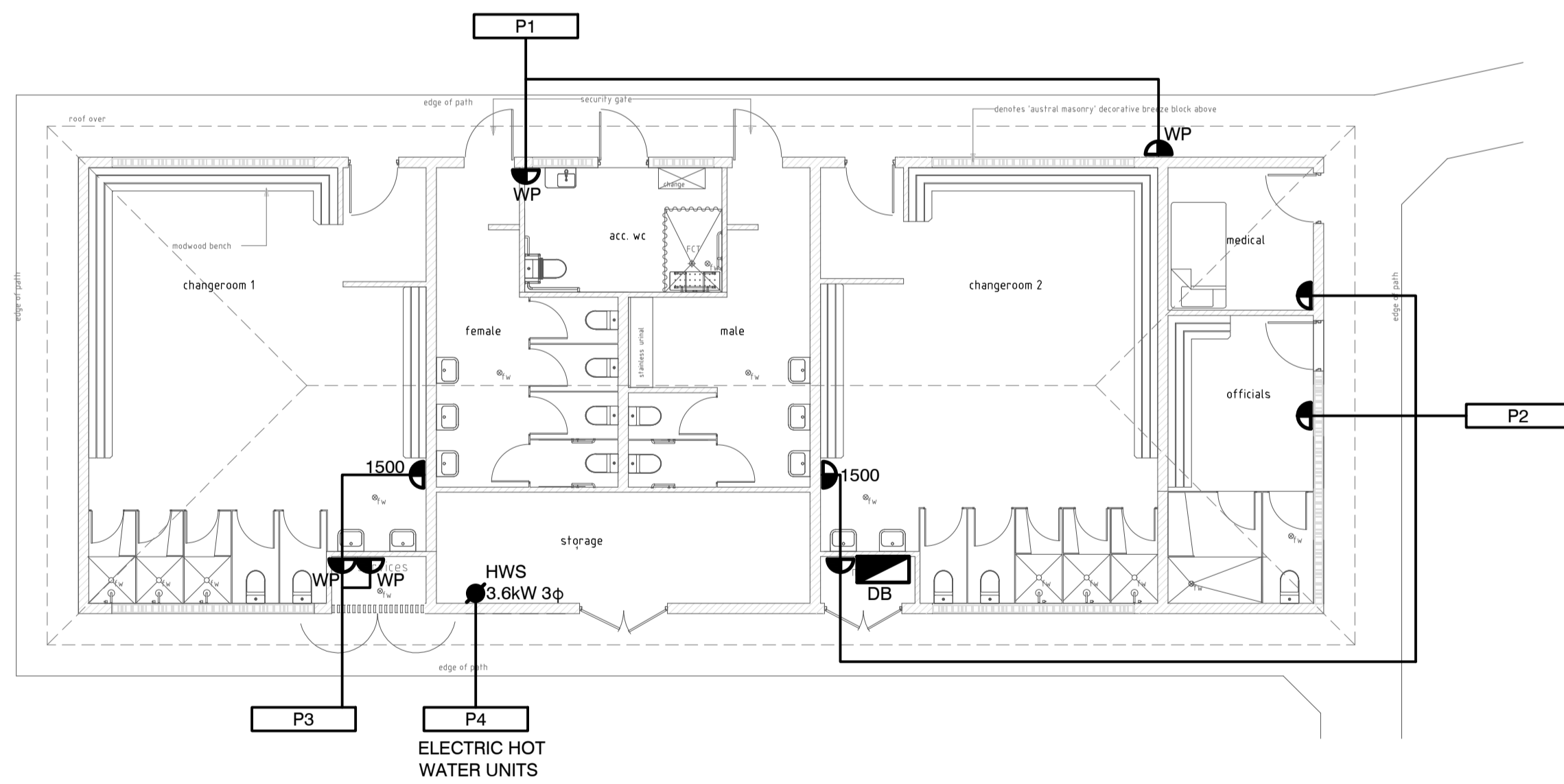


**EXISTING MAIN SWITCHBOARD**

- NOTES:
1. MODIFY SWITCHBOARD & PROVIDE NEW 50A SUBMAIN CIRCUIT BREAKER.
  2. CIRCUIT BREAKER TO BE OF SAME MAKE & TYPE AS EXISTING.

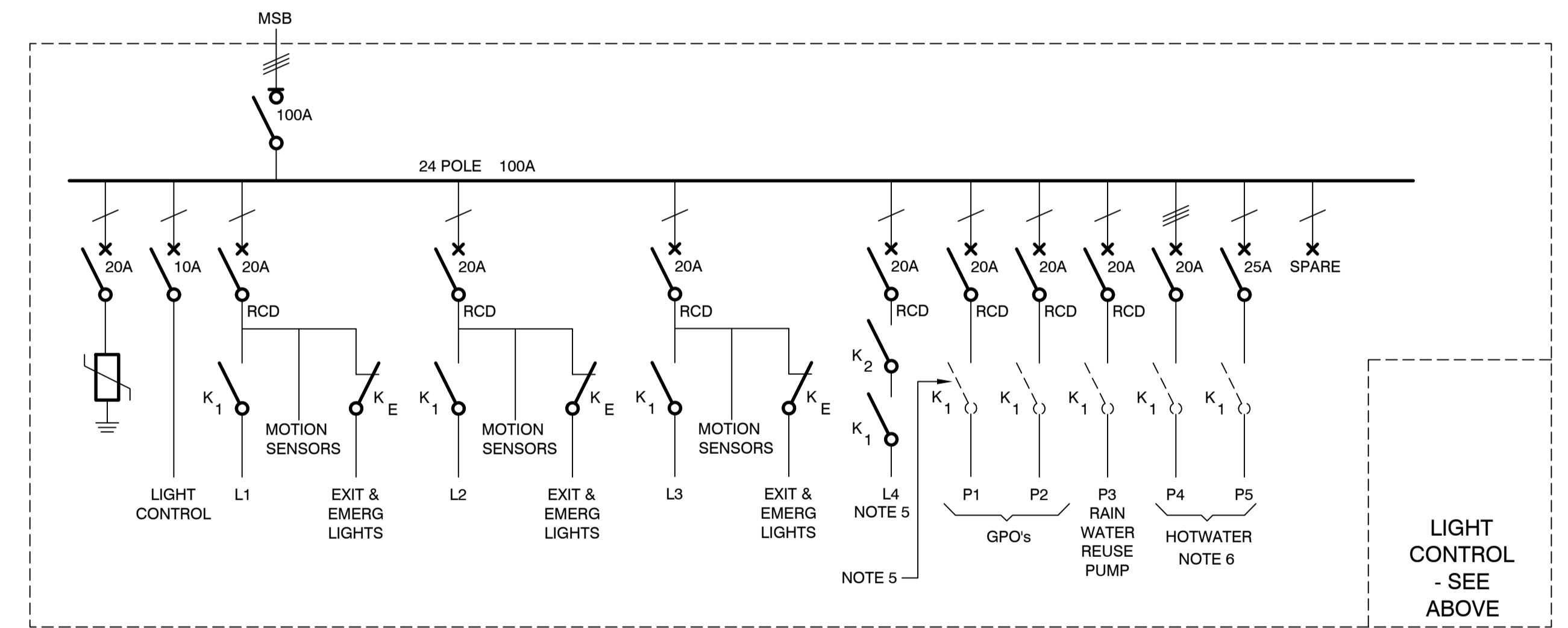


**LIGHT CONTROL - LOCATED IN DB**



- NOTES:
1. CHANGE ROOM GPO TO BE MOUNTED AT 1500mm AFFL.

**POWER LAYOUT**



**DISTRIBUTION BOARD - DB**

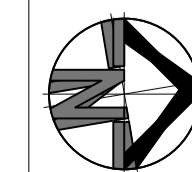
- NOTES:
1. INPUT FAULT 6kA.
  2. SWITCHBOARD TO BE WALL MOUNTED WITH HINGED LOCKABLE DOORS.
  3. SUBMIT SWITCHBOARD DESIGN TO ESSENTIAL ENERGY FOR APPROVAL/COMMENT.
  4. ELECTRICAL CONTRACTOR TO CONFIRM ELECTRICAL REQUIREMENTS OF APPLIANCES PROVIDED & INSTALLED BY OTHER TRADES.
  5. CONSULT WITH MANAGEMENT & OBTAIN THEIR INSTRUCTION IF THESE CIRCUITS ARE TO BE INCLUDED ON THE MASTER SWITCH.
  6. CONFIRM HOTWATER SYSTEM CIRCUIT BREAKER RATING OFF HYDRAULIC CONTRACTOR



20.8.18	2	TENDER ISSUE
19.7.18	1	FOR REVIEW
Date	Issue	Reason for Issue

THIS DRAWING IS NOT TO BE USED FOR ANY CONSTRUCTION PURPOSE UNLESS NOTED OTHERWISE IN THE ISSUE COLUMN. MARLINE NEWCASTLE PTY LTD. ACCEPT NO RESPONSIBILITY FOR ANY UNAUTHORISED USE OF DRAWINGS ISSUED ON A "INFORMATION AND DISCUSSION" ONLY BASIS.

THIS DRAWING IS COPYRIGHT AND IS THE PROPERTY OF MARLINE NEWCASTLE PTY LTD AND MUST NOT BE RETAINED, COPIED OR USED WITHOUT WRITTEN CONSENT OF MARLINE NEWCASTLE.



**marline**  
BUILDING SERVICES ENGINEERS  
MECHANICAL . ELECTRICAL . HYDRAULIC . FIRE . ENERGY

P (02) 4925 9300  
mail@marline.com.au  
www.marline.com.au  
ABN 49 612 456 381

**MARLINE NEWCASTLE PTY LTD**  
Unit 4 239 King Street  
Newcastle NSW 2300  
ACN 612 456 381

Client	MOREE PLAINS SHIRE COUNCIL
Architect	BARNSON PTY LTD
Project	BOGGABILLA SPORTS FIELD AMENITIES

Drawn : R.S.	Design : K.HOYER	Verify : S.RYAN
Scale @ A1 :	1:100	Date : JULY 2018
Discipline	<b>ELECTRICAL SERVICES</b>	Job No. <b>10456</b>
Drawing Title	<b>AMENITIES BLOCK POWER &amp; LIGHTING LAYOUT</b>	Issue <b>2</b>
		Drawing No. <b>E-03</b>