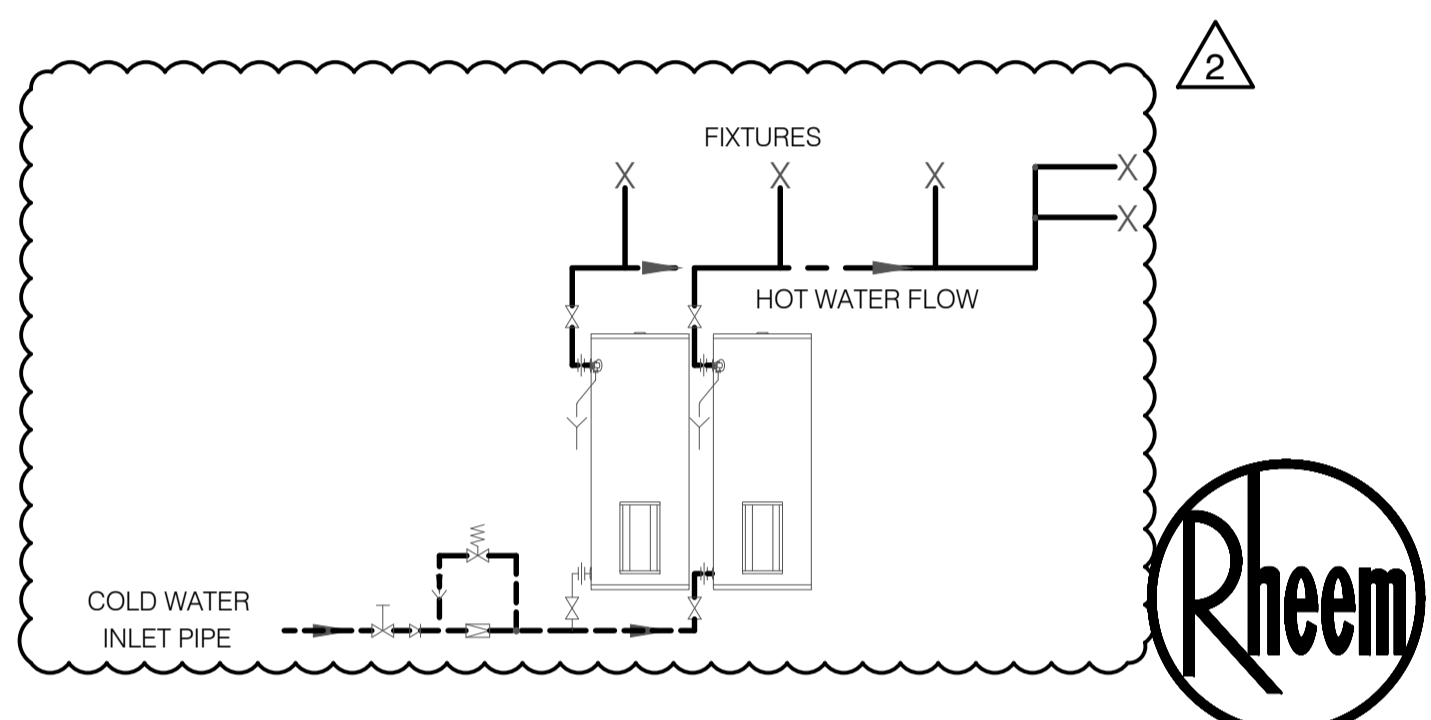


- LEGEND**
- ⊘ STOP COCK
 - ⊘ NON RETURN VALVE
 - ⊘ PRESSURE LIMITING VALVE (IF REQUIRED)
 - ⊘ COLD WATER RELIEF VALVE
 - ⊘ GATE VALVE
 - ⊘ CIRCULATOR
 - ⊘ FIXTURES
 - DIRECTION OF FLOW
 - ≡ UNION
 - ⊘ TUNDISH

INLET OUTLET CONNECTIONS:-
 RP 1 1/2 / 32
T&PR VALVE CONNECTIONS:-
 RP 3/4 / 20
T&PR VALVE SETTING:-
 1000 kPa

NOTES:
 N1. MINIMUM SPACE BETWEEN WALL AND BACK OF WATER HEATER IS 100mm.
 N2. A MINIMUM OF 900mm SHOULD BE LEFT IN FRONT OF THE WATER HEATER FOR ACCESS, SERVICING AND WATER HEATER REMOVAL.

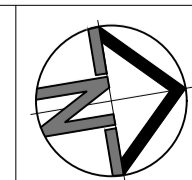


RHEEM WATER HEATERS HEAVY DUTY ELECTRIC 2 x 613315

11.09.18	2	REVISED TENDER ISSUE
20.8.18	1	TENDER ISSUE
Date	Issue	Reason for Issue

THIS DRAWING IS NOT TO BE USED FOR ANY CONSTRUCTION PURPOSE UNLESS NOTED OTHERWISE IN THE ISSUE COLUMN. MARLINE NEWCASTLE PTY LTD. ACCEPT NO RESPONSIBILITY FOR ANY UNAUTHORISED USE OF DRAWINGS ISSUED ON A "INFORMATION AND DISCUSSION" ONLY BASIS.

THIS DRAWING IS COPYRIGHT AND IS THE PROPERTY OF MARLINE NEWCASTLE PTY LTD AND MUST NOT BE RETAINED, COPIED OR USED WITHOUT WRITTEN CONSENT OF MARLINE NEWCASTLE.



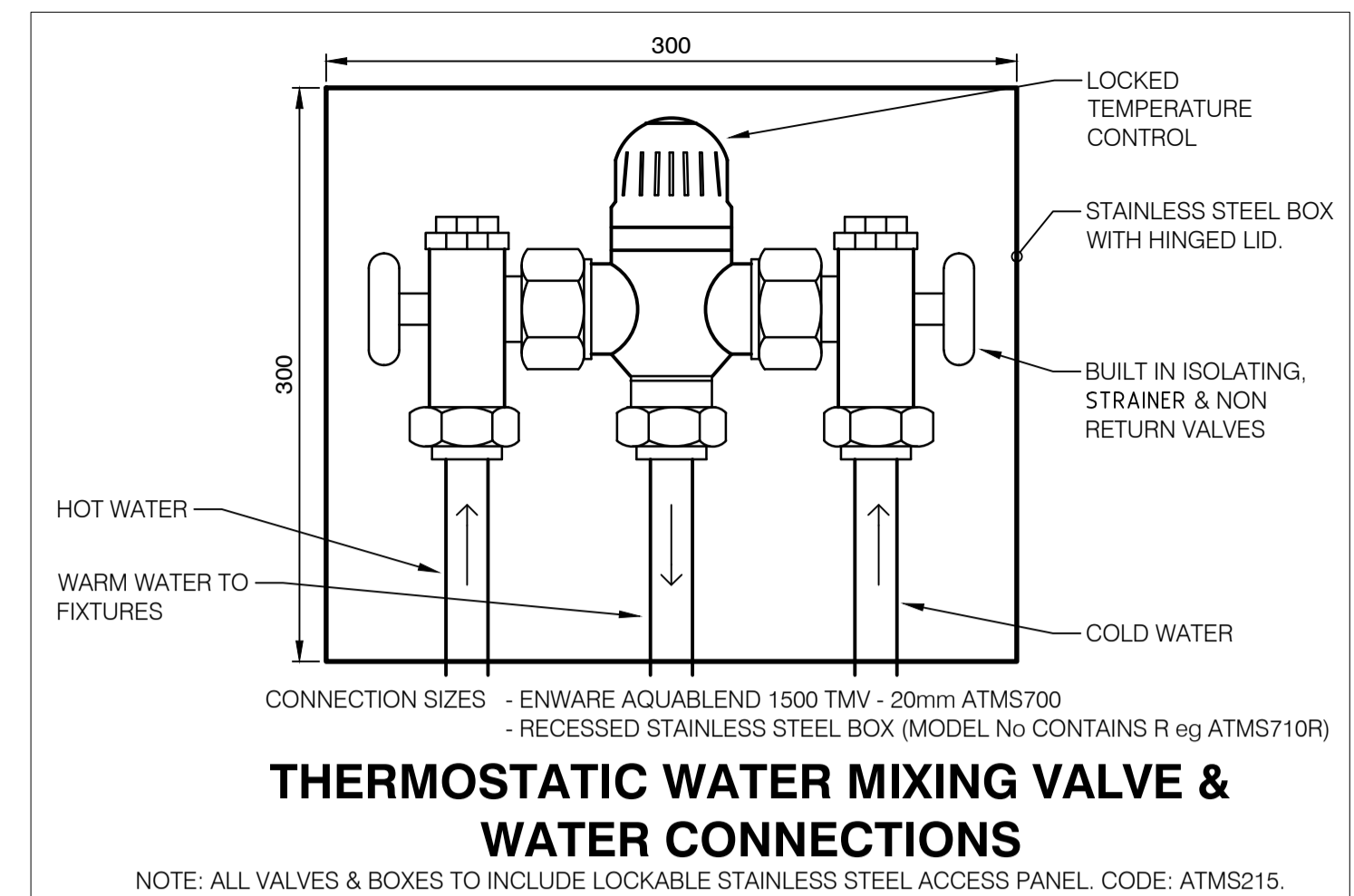
marline
 BUILDING SERVICES ENGINEERS
 MECHANICAL ELECTRICAL HYDRAULIC FIRE ENERGY

P (02) 4925 9300
 mail@marline.com.au
 www.marline.com.au
 ABN 49 612 456 381

MARLINE NEWCASTLE PTY LTD
 Unit 4 239 King Street
 Newcastle NSW 2300
 ACN 612 456 381

Client	MOREE PLAINS SHIRE COUNCIL
Architect	BARNSON PTY LTD
Project	BOGGABILLA SPORTS FIELD AMENITIES

Drawn : L.R.	Design : P.SORENSEN	Verify : B.MAHER
Scale @ A1 :	N.T.S	Date : JULY 2018
Discipline	HYDRAULIC SERVICES	Job No. 10456
Drawing Title	DETAILS	Issue 2
		Drawing No. H-04



THERMOSTATIC WATER MIXING VALVE & WATER CONNECTIONS

NOTE: ALL VALVES & BOXES TO INCLUDE LOCKABLE STAINLESS STEEL ACCESS PANEL. CODE: ATMS215.